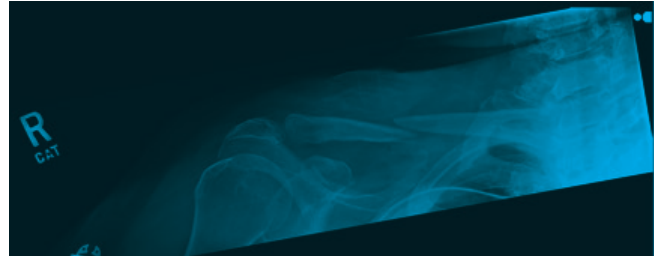


# A Brief Guide to Initial Management of Orthopedic Injuries in the Emergency Department

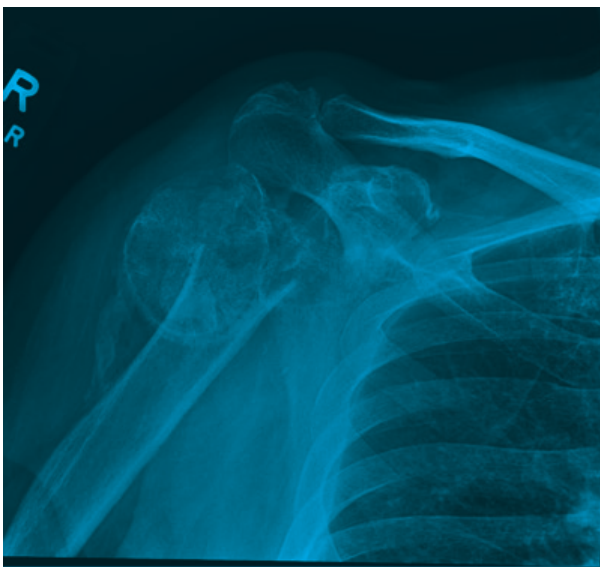
## Radiographs

### Clavicle Fracture



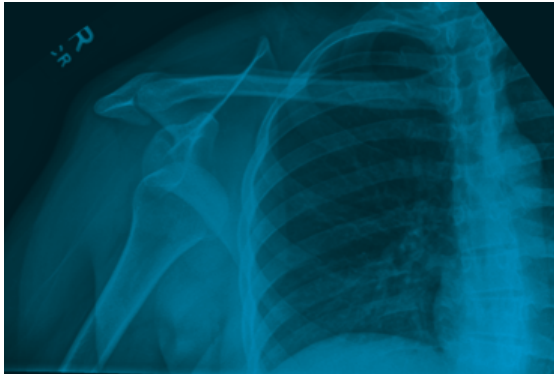
## Radiographs

### Proximal Humerus Fracture



**Radiographs**

**Shoulder Dislocation**



**Radiographs**

**Midshaft Humerus Fracture**



**Radiographs**

**Distal Humerus Fracture**



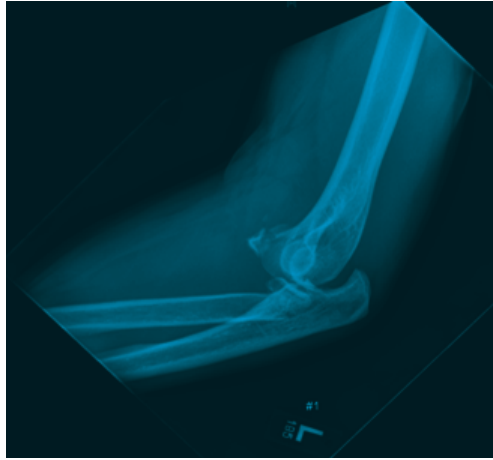
**Radiographs**

**Elbow Dislocation (Terrible triad - elbow dislocation, radial head/neck fracture, coronoid fracture)**



**Radiographs**

**Both bone forearm fracture**



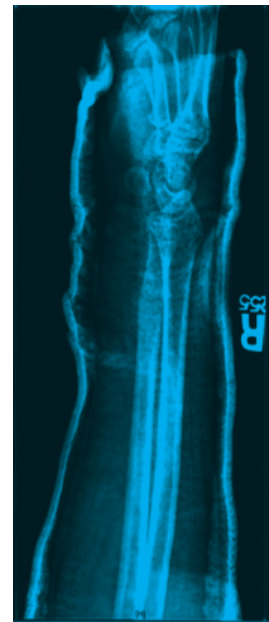
**Radiographs**

**Distal radius fracture**



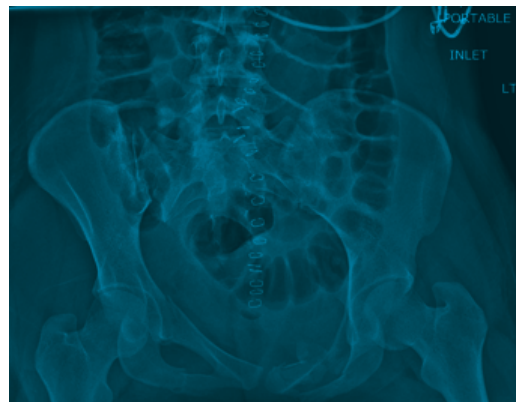
Radiographs

Distal radius fracture



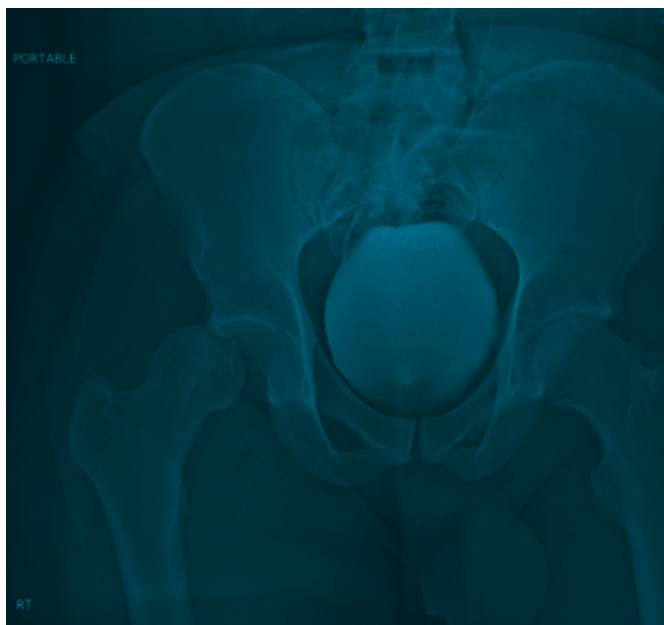
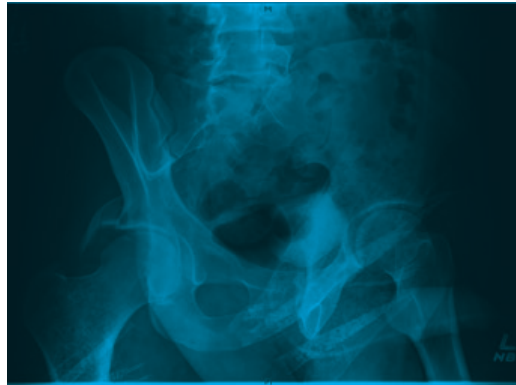
Radiographs

Acetabulum fracture (AP, Judet views)



Radiographs

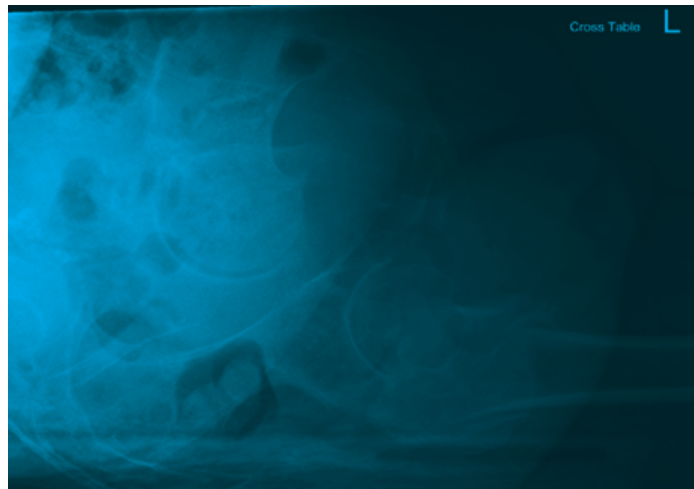
Hip dislocation





**Radiographs**

**Intertrochanteric fracture**



**Radiographs**

**Midshaft femur fracture (segmental, traction pin)**



Radiographs

Distal femur fracture



Radiographs

Patella fracture





**Radiographs**

**Tibial plateau fracture**



**Radiographs**

**Tibial shaft fracture (distal third + fibula fracture)**



Radiographs

Pilon fracture



Radiographs

Ankle fracture/dislocation



**Radiographs**

**Calcaneus fracture**



**Radiographs**

**Pseudo Jones fracture**

